

# Approaching changes in a NETWORK: methodology of training and development of innovation

# Convention on the Rights of Persons with Disabilities

*The Convention follows decades of work by the United Nations to change attitudes and approaches to persons with disabilities. It takes to a new height the movement from viewing persons with disabilities as “objects” of charity, medical treatment and social protection towards viewing persons with disabilities as “subjects” with rights, who are capable of claiming those rights and making decisions for their lives based on their free and informed consent as well as being active members of society.*

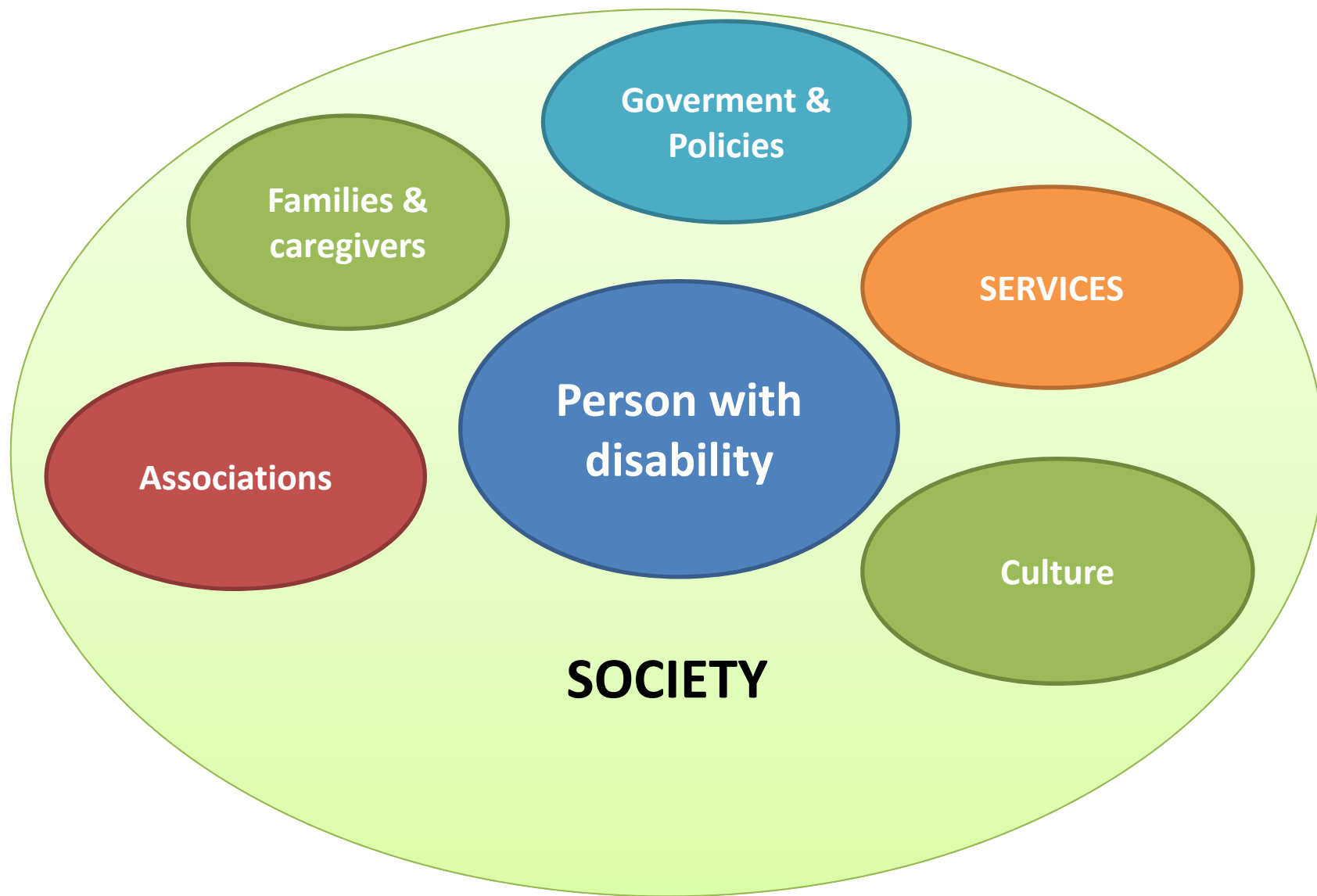
<https://www.un.org/development/desa/disabilities/convention-on-the-rights-of-persons-with-disabilities.html>

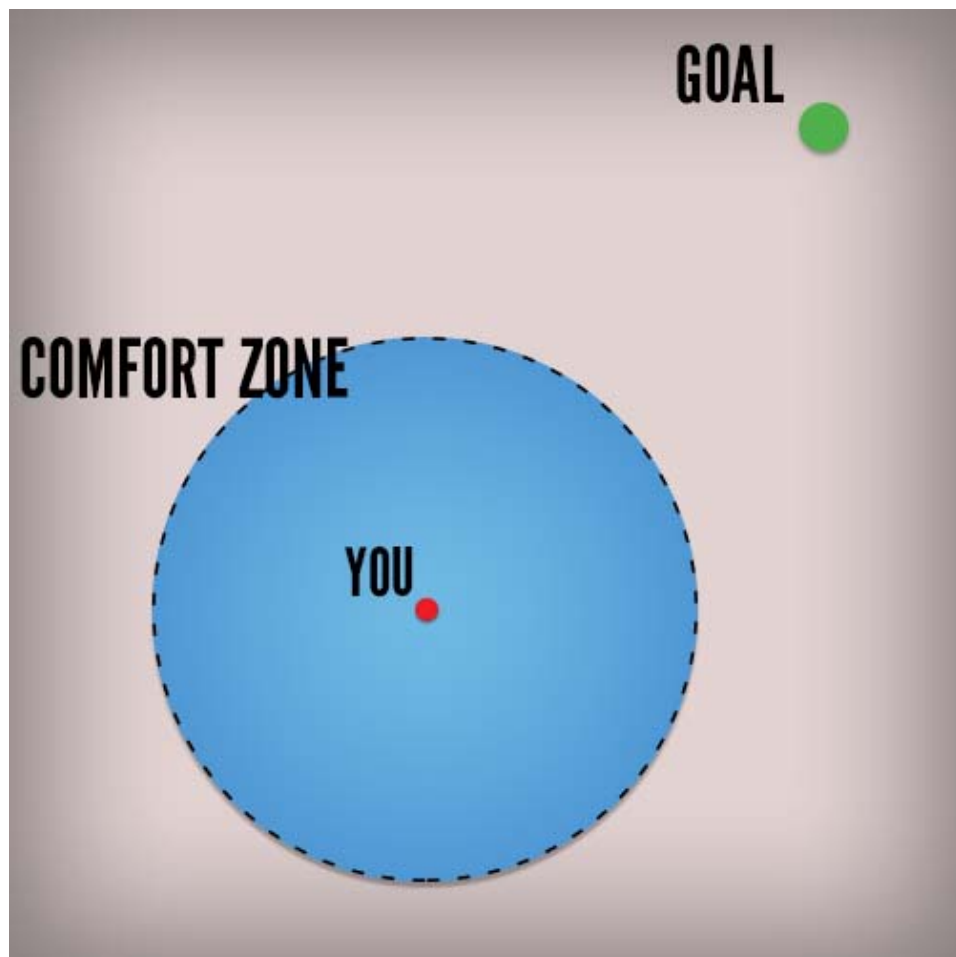
# Convention on the Rights of Persons with Disabilities



# HOW CHANGES HAPPENS?







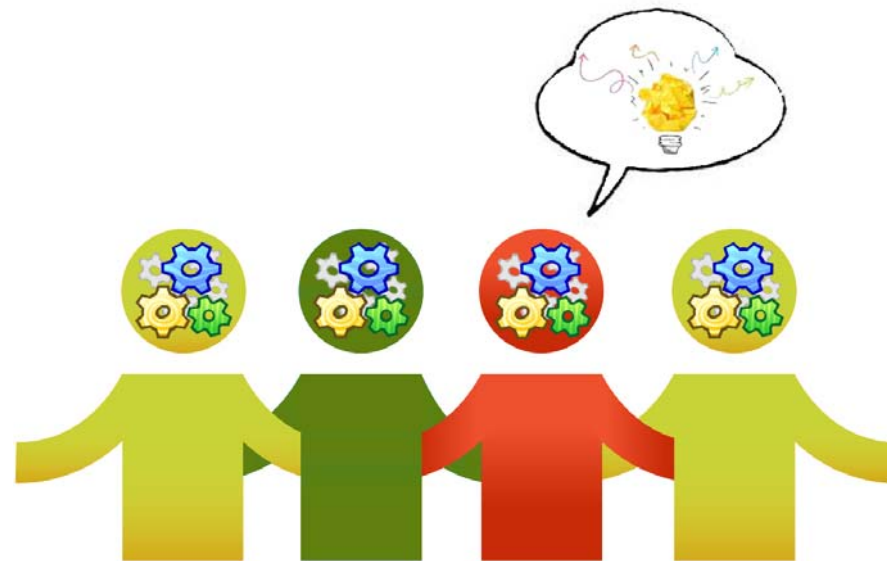
**HOW TO REACH  
“RESPECT FOR  
THE RIGHTS OF  
PERSONS WITH  
DISABILITIES ”?**

***You want to go fast, run alone.  
If you want to go far, run together with someone.***

Rights of Persons with Disabilities	WHO CAN PROMOTE, SUPPORT, PROTECT
Living independently and being included in the community	Region, Cooperative, Association, Families, ....
Personal mobility	Association, Accessible Public Services, ..
Habilitation and rehabilitation	Public Health, Cooperative, Gyms, Sport Association, ...
Work and employment	Entreprise, Social Cooperative, ...
Participation in cultural life, recreation, leisure and sport	Association, Cinema, Social Cooperative, .....

## **COMMUNITY BASED SUPPORT**

# WE BELIVE IN *NETWORK APPROACH*





## WHICH KIND OF NETWORK?

- **EU NETWORK:** Ensa, EU project
- **POLICIES:** Ministry of Welfare – the National Observatory on conditions of persons with disabilities, The Veneto Region , Regional Federation of social cooperatives in Veneto, Public Institutions, Service organizations, ..
- **PRACTISE:** Cooperatives, Associations, Caregivers
- **CULTURE:** University, Schools, Associations,
- **TRAINING:** *Irecoop Veneto and “the others”*

## EU PROJECT – *for professionals*

Learning by sharing social inclusion practices	GOALS
<p><b>Transnational mobility project financed by the European Social Fund- Veneto Region.</b></p> <p>15 professionists from Veneto visited good practices of inclusion services for persons with disabilities in France, Spain and Belgium.</p>	<p>To favor social innovation for implementation of new territorial Welfare by :</p> <ul style="list-style-type: none"><li>- investing in human capital, and in particularly in the personal and professional skills of professionals;</li><li>- exchange of experiences and knowledge between professionals and their organizations;</li><li>- creating regional and European networks for continuous collaborations.</li></ul>

## EU PROJECT – *for people with disability*

Mobility 4 Disability	GOALS
<p><b>Transnational mobility project for persons with disabilities financed by ESF- Veneto Region.</b> 9 persons with various disabilities in small groups will realize short work experiences in organizations experienced in work with persons with disabilities from Croatia, Belgium and Spain.</p>	<ul style="list-style-type: none"><li>-To give more opportunities of personal and professional growth to persons with disabilities;</li><li>- To increase collaboration and networking among social cooperatives of disability field in Veneto and similar organizations in other countries</li><li>-To favor increase of social inclusion practices in social cooperatives of Veneto by developing competences of professionals involved in the project.</li></ul>

# PRACTISE



# PRACTISE

## A NETWORK “IMMAGINABILI RISORSE”

### WHAT?

Research laboratory - structured action around the strategies and effective methods for real social inclusion of people with disabilities in the context of **the territory**

### WHO?

Public institution  
Social Cooperative  
Association  
Foundation

### HOW?

Connecting practises  
National Meeting (march 2016)  
Methodological workshop  
"Inclusion of disability and social value"

### WHEN?

From 2011 on...

# PRACTISE

## GOALS

- To strengthen relations between the participants of the network;
- To facilitate connections, exchanges and collaborations, and facilitate the growth of all connected members;
- To enrich the methodological and operational culture of operators and participating realities
- To increase the ideational, design and application capacity of operators and participating realities;
- To develop a methodological reflection and a shared language around the social inclusion-value;
- To contribute to the qualitative growth of a thought/approach that characterizes the network and to elaborate elements and conditions for an adequate spread of this thought.

# TRAINING – *Connessioni future*



# TRAINING

## CONNESSIONI

### WHAT?

“**accelerator**” for chainging

- approach and metodologies
- process and instruments

### WHO?

Services Organization (from Boss to operator)

Families

Volunteers

University

People with disabilities

### HOW?

Seminar

Training course

Focus group

Study visits

Workshop

Research

### WHEN?

From 2013 and go on



# TRAINING

## GOALS

- |   |  |
|---|--|
| <ul style="list-style-type: none"><li>-To make an impact on models of organization of services;</li><li>- To develop “a supply chain“ able to integrate resources of territory to support the Life projects of PwD;</li><li>- To identify the evaluation paths;</li><li>- To support and to promote a revision of the role of social workers;</li></ul> | <ul style="list-style-type: none"><li>-To integrate scientific contributions in order to redirect services and interventions with a focus on aging and complex disabilities issues;</li><li>- To develop reflections on the life project;</li><li>-To analyze the regulatory constraints;</li><li>- To feed a culture of inclusion</li></ul> |
|---|--|

**Thank you!**

