

**INCLUSIVE POLICIES  
ON DISABILITY IN THE  
REGION OF VALENCIA**

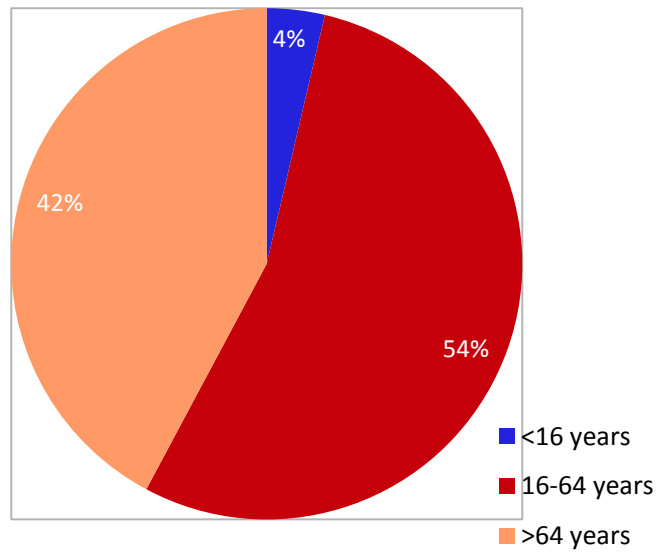
# CONTEXT

POPULATION REGION OF VALENCIA : 5.004.844

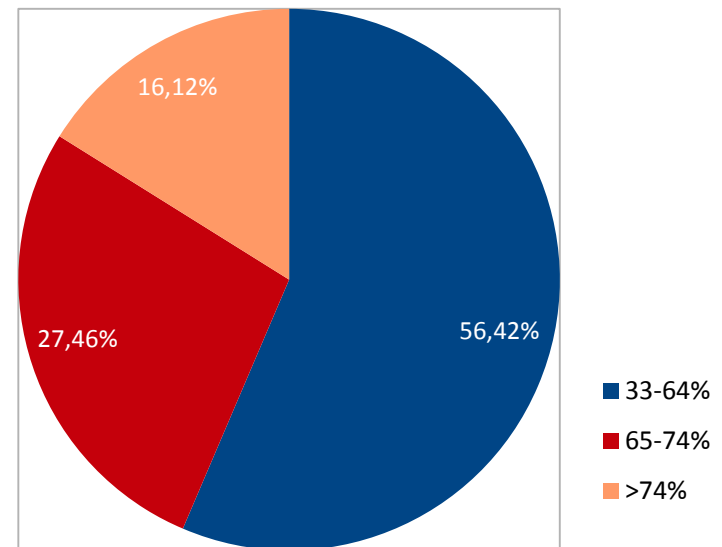
PEOPLE WITH DISABILITIES: 6,48%

# CONTEXT

AGE DISTRIBUTION



DISABILITY DISTRIBUTION



# WORKING AREA

- THE DG OF FUNCTIONAL DIVERSITY FOCUSES ITS ACTIVITIES ON TWO AGE RANGES:
  - FROM 0 TO 6 YEARS
  - FROM 16 TO 65 YEARS

# OUR POLICY

- RESOURCES
- PROGRAMMES
- COORDINATION WITH OTHER ORGANIZATIONS

# **TYPE OF RESOURCES**

- **RESOURCES FOR PEOPLE WITH  
DISABILITIES**
- **RESOURCES FOR PEOPLE WITH  
MENTAL ILLNESS**

# **RESOURCES FOR PEOPLE WITH DISABILITIES**

**306 CENTERS  
9.402 FUNDED PLACES**

# **CAT (Early Childhood Center)**

Focused on the care or preventive treatment of children with developmental problems or risk of suffering for reasons of prenatal, perinatal or postnatal origin.

Aimed mainly to children between 0-3 years, but also up to 6 years.

**38 CENTERS**



# DAY CENTERS

Specialized and specific centers for people with disabilities, with severe deterioration of their functional capabilities and their social environment. Intensive functional recovery programs and structured activities of leisure time are developed.

**54 CENTERS**

# OCCUPACIONAL CENTERS

Open Center designed to support preventive marginalization activities, rehabilitative activities and psychosocial support.

**89 CENTERS**

# RESIDENCES

Open and flexible residential center for people with disabilities. Where it will be held the rehabilitation of these people focusing its action towards improving personal and social autonomy and support standardization and community integration.

**59 CENTERS**

# **SUPERVISED HOUSING**

Designed as functional homes with small dimensions, appropriate to the number and characteristics of its users. Inserted in the community environment in which coexist an homogeneous group of people with disabilities in need of intermittent or limited support, partially self-managed.

**66 CENTERS**

# **.RESOURCES FOR PEOPLE WITH MENTAL ILLNESS**

**103 CENTERS  
1.973 FUNDED PLACES**

# **CRIS (Center for Rehabilitation and Social Integration)**

Specific and specialized services on an outpatient basis, aimed at people with chronic mental illness, with a significant deterioration of its functional capabilities, which will take place programs suited to their characteristics, needs and specific situation.

**20 CENTERS**

# DAY CENTERS

Specialized and specific facilities for people with chronic mental illness with severe deterioration of their functional capabilities and their social environment, where are developed intensive programs of functional and structured leisure time activities.

**14 CENTERS**

# **OCCUPACIONAL CENTER FOR PEOPLE WITH MENTAL ILLNESS**

Open Center designed to support preventive  
marginalization activities, rehabilitative  
activities and psychosocial support.

**2 CENTERS**



# **CEEM (SPECIFIC CENTER FOR PEOPLE WITH CHRONIC MENTAL ILLNESS)**

Open and flexible residential center for people with chronic mental illness not requiring hospitalization, focusing its action towards improving personal and social autonomy and supporting their standardization and community integration.

**30 CENTERS**

# **SUPERVISED HOUSING**

Designed as functional homes with small dimensions, appropriate to the number and characteristics of its users. Inserted in the community environment in which coexist an homogeneous group of people with mental illness in need of intermittent or limited support, partially self-managed.

**37 CENTERS**

# PROGRAMMES

Intended to meet, directly, the special needs of people with disabilities living in their family and social environment, and to promote all kinds of actions for the promotion of personal autonomy.

# TYPES OF PROGRAMMES

**COHABITATION PROGRAMMES:** intended to facilitate community integration by providing the connection with others through standardized resources.

**COOPERATION PROGRAMMES:** designed to enhance community life by promoting participation in common tasks and social initiative.

# POLICY AXES

- INVOLVEMENT
- IMPLICATION AND PASSION
- CREATIVITY

*THANKS FOR YOUR ATTENTION*